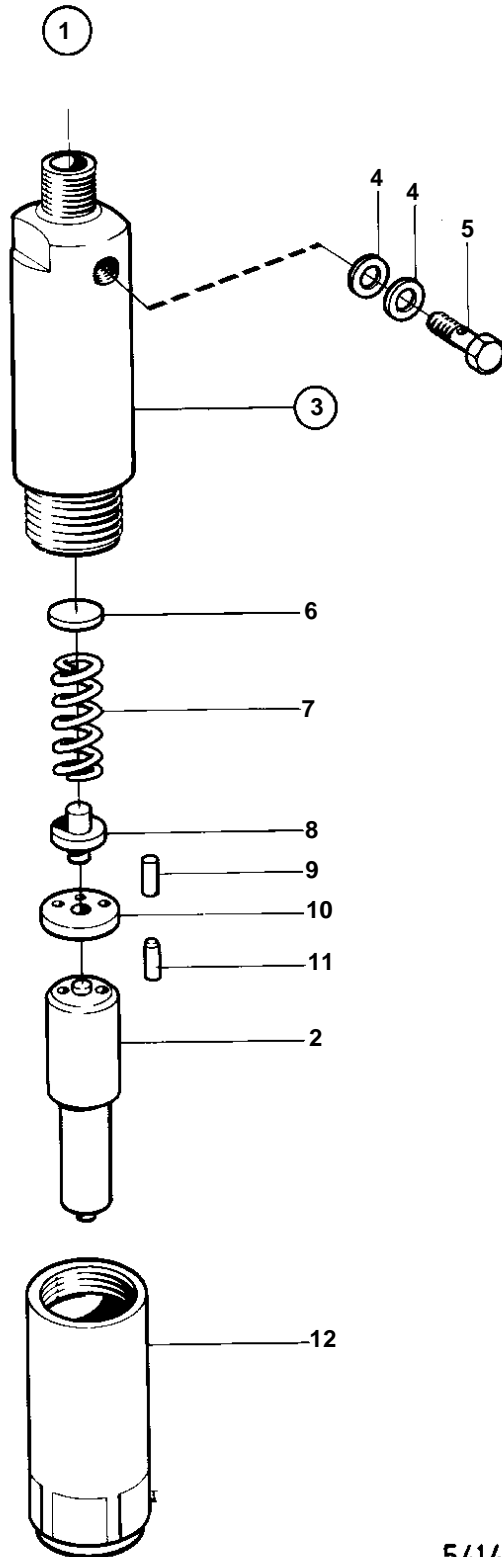


TMD102A, TAMD102A



5414

TMD102A, TAMD102A

REF	PART NO.	QTY	DESCRIPTION	NOTES
1	424530	1	Injector	MARKED 815
	3803243	1	Injector, exch	Exchange unit
2	424531	1	• Nozzle	
3		1	• Nozzle retainer	
4	947620	2	• • Gasket	
5	240579	1	• • Hollow screw	
6	244797	X	• • Shim	TH = 1,00mm
	244798	X	• • Shim	TH = 1,04mm
	244788	X	• • Shim	TH = 1,08mm
	860174	X	• • Shim	TH = 1,10mm
	244804	X	• • Shim	TH = 1,12mm
	244801	X	• • Shim	TH = 1,16mm
	244799	X	• • Shim	TH = 1,20mm
	6212417	X	• • Shim	TH = 1,22mm
	244805	X	• • Shim	TH = 1,24mm
	244807	X	• • Shim	TH = 1,28mm
	859356	X	• • Shim	TH = 1,30mm
	244789	X	• • Shim	TH = 1,32mm
	858908	X	• • Shim	TH = 1,34mm
	244811	X	• • Shim	TH = 1,36mm
	846966	X	• • Shim	TH = 1,38mm
	244800	X	• • Shim	TH = 1,40mm
	6212393	X	• • Shim	TH = 1,42mm
	244790	X	• • Shim	TH = 1,44mm
	244802	X	• • Shim	TH = 1,48mm
	859358	X	• • Shim	TH = 1,50mm
	244791	X	• • Shim	TH = 1,52mm
	846954	X	• • Shim	TH = 1,54mm
	244792	X	• • Shim	TH = 1,56mm
	858906	X	• • Shim	TH = 1,58mm
	244793	X	• • Shim	TH = 1,60mm
	846970	X	• • Shim	TH = 1,62mm
	244806	X	• • Shim	TH = 1,64mm
	244803	X	• • Shim	TH = 1,68mm
	858905	X	• • Shim	TH = 1,70mm
	244794	X	• • Shim	TH = 1,72mm
	846957	X	• • Shim	TH = 1,74mm
	244812	X	• • Shim	TH = 1,76mm
	846975	X	• • Shim	TH = 1,78mm
	844328	X	• • Shim	TH = 1,80mm
	6212420	X	• • Shim	TH = 1,82mm
	846958	X	• • Shim	TH = 1,84mm
	244808	X	• • Shim	TH = 1,86mm
	244813	X	• • Shim	TH = 1,88mm
	244795	X	• • Shim	TH = 1,92mm
	846959	X	• • Shim	TH = 1,94mm
	244796	X	• • Shim	TH = 1,96mm
	846980	X	• • Shim	TH = 1,98mm
7	244820	1	• • Compression spring	
8	244821	1	• • Pressure bolt	
9	844339	2	• • Locating pin	
10	1698513	1	• • Washer	
11	244447	2	• • Pin	
12	244448	1	• • Cap nut	